

# ALGIZ 7

## Quick Start Guide




**handheld**

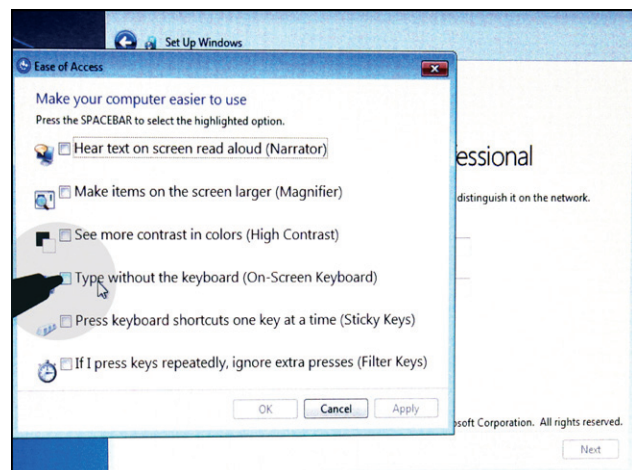
## Please follow these steps, before starting to use your Algiz 7 for the first time:

1. **IMPORTANT:** Write down the Microsoft Windows license Product Key: XXXXX-XXXXX-XXXXX-XXXXX-XXXXX. Located under the battery. You will need it when using the unit for the first time.
2. You will be forced to activate your Windows License Product Key during the installation process. This requires Internet connection. Insert an Ethernet cable. Or choose to activate your license by using the toll-free automatic phone activation (If you are unable to do either, choose to activate later and please download the guide on our FAQ's page under [www.handheldgroup.com](http://www.handheldgroup.com)).
3. Install and lock the batteries, attach the charger and start charging.
4. When starting the unit for the first time, press the power key and HOLD for 4-5 seconds (until the left LED turns green).

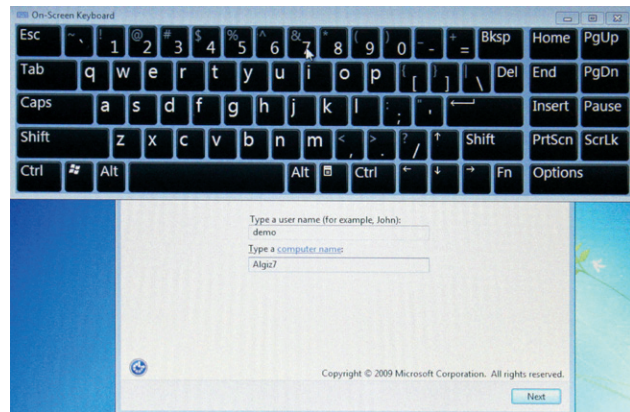
5. Choose your country or region.



6. Time, currency and keyboard layout are a setting which can be changed later on, in the control panel.
7. To type a username, click on the icon  in the left bottom corner.
8. Check "Type without the keyboard" and press OK.



9. Choose and type a username + unit name, using the on-screen keyboard.
10. Choose and type your password.
11. Enter your Windows License Product Key, as noted in step 2.
12. Read and accept the license terms.
13. Choose your settings for updates, date and time.



#### 14. **How to activate Windows – Now**

It is possible to activate Windows now or later.

##### **Via Ethernet**

- Requires an Internet connection
- Connect Ethernet cable for access to local network and Internet
- Chose to activate Windows *now* and *online*

##### **Via WiFi/WLAN**

- Requires an Internet connection
- Choose to activate Windows *now*
- Set up internet connection via WiFi network
- Choose to activate Windows *online*

Windows should automatically connect to internet and activate.

It is also possible to activate Windows via toll-free automatic phone activation.

#### 15. **Algiz 7 Windows Activation Guide**

1. Make sure you have your Windows License Product Key code available. This will be needed when activating your license.
  2. Establish a connection by connecting your unit using WiFi or by connecting an Ethernet cable.
  3. Once you have established a connection, Click on the “Start/Windows” button.
  4. Control Panel.
  5. System and Security.
  6. System.
  7. Scroll down to the bottom of the screen and click on the text: “You must activate today, activate Windows now”.
  8. Click on “Activate Windows online now”.
  9. When it is finished you can close the window.
- If you are not able to establish an Ethernet or WiFi connection you can choose “See other ways to activate”.  
Choose “Use the automated phone system” and follow the instructions.

16. Continue the charging. First charge approximately 4 hours.

The full product manual can be downloaded from [www.handheldgroup.com](http://www.handheldgroup.com) (or [www.ruggedalgiz.com](http://www.ruggedalgiz.com)).

# How to use the Tablet



	Components	Function description
1	Power On and Off	Press 4 seconds to turn on the tablet pc.
2	LED indicator	Shows the power status. SSD status. Left and right battery status. Wireless status.
3	Menu	Press Menu function to show brightness, volume, battery status, wireless enable/disable and system status
4	F1 – F3 hotkey	6 Programmable hot key functions for user to define by application, Use short or Long press on the keys for different functions. F1 short will start help menu.
5	Up/Down/Left/Right/OK button	Control the up, down, left, right and Enter function

## LED indicators

LED Term	Indicator status description
Power mode	Green: System ON No light: System OFF
Battery status	No light: 100% fully charged or power on with AC adapter Green light: Running on battery >5% Orange light: Charging Red light: Low battery
SSD status	Green light blinking: SSD in use
WiFi status	Green light blinking: WiFi in use. Green light turned off: WiFi off